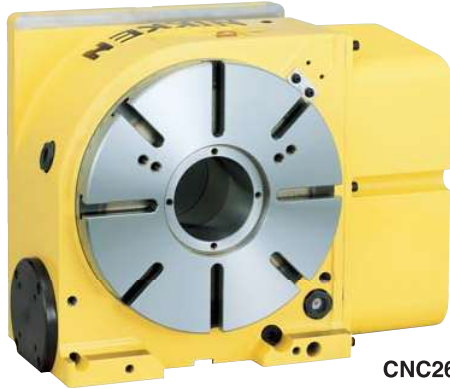


# CNC ROTARY TABLE



CNC260

■ The rotary table can be used vertically or horizontally depending on the application.

● Explanation of the Code No. (Example)

## CNC 260 L F A - M

- No Letter: without motor  
M: with motor
- No Letter: DC servo motor  
A: AC servo motor
- Motor Maker ☞ P.37  
A21: with NIKKEN  $\alpha$ 21 controller  
F:FANUC M:MELDAS Y:YASNAC OSP:OSP  
T:TOSNUC N:NEC S:SANYO Z:SIEMENS  
I:INDRAMAT H:HEIDENHAIN X:ISOFLEX  
SEM:SEM B:BOSCH
- No Letter: Right hand mounted motor  
L: Left hand mounted motor
- Diameter of Table  
260, 300, 320, 400
- CNC: Standard  
CNCZ: High Speed Z Series  
CNCB: Big Bore

## Specifications

( ): High Speed CNC ROTARY Table Z series

Rotary table with  $\alpha$ 21 controller, refer ☞ P.69, P.70

Item / Code No.		CNC260 CNCZ260	CNC302 CNCZ302	CNC321 CNCZ321	CNC401 CNCZ401	CNCB350
Diameter of Table	$\phi$ mm	260	300	320	400	350
Diameter of Spindle Hole	$\phi$ mm	$\phi 80H7$	$\phi 80H7$	$\phi 105H7$	$\phi 105H7$	$\phi 154H7$
Centre Height	mm	170	170	230	230	230
Width of T Slot	mm	$12^{+0.018}_0$	$12^{+0.018}_0$	$12^{+0.018}_0$	$14^{+0.018}_0$	$14^{+0.018}_0$
Clamping System		Air/Hyd.	Air/Hyd.	Hyd.	Hyd.	Hyd.
Clamping Torque	N·m	588 / 1568	588 / 1568	1760	1760	3331
Table Inertia at Motor Shaft $(\frac{GD^2}{4})$	$kg \cdot m^2 \times 10^{-3}$	0.33	0.33	2.8	2.8	2.9
Servo Motor	$min^{-1}$	$\alpha$ iF4/5000·2000	$\alpha$ iF4/5000·2000	$\alpha$ iF12/4000·2000	$\alpha$ iF12/4000·2000	$\alpha$ iF12/4000·2000
MIN. Increment		0.001°	0.001°	0.001°	0.001°	0.001°
Rotation Speed	$min^{-1}$	16.6(33.3)	16.6(33.3)	22.2(44.4)	22.2(44.4)	22.2
Total Reduction Ratio		1/120(1/60)	1/120(1/60)	1/90(1/45)	1/90(1/45)	1/90
Indexing Accuracy	sec	20	20	15	15	15
Net Weight	kg	115	120	200	230	245
MAX. Work Load on the Table	Vertical	175	175	250	250	250
	Horizontal	350	350	500	500	500
MAX. Thrust Load applicable on the Table		42480	42480	53100	53100	53100
	*1	1442	1442	2648	2648	2648
		2320	2320	3840	3840	3840
Guide Line of MAX. Unbalancing Load	*2	5.0	5.0	10.0	10.0	10.0
MAX. Work Inertia	Vertical	3.2(1.6)	3.2(1.6)	6.4(3.2)	6.4(3.2)	6.4
Driving Torque	*3	192(153)	192(153)	432(345)	432(345)	432

★\*1 This is the strength of the worm wheel without brake. It is applied against dynamic cutting thrust.

★\*2 The guide line of MAX unbalancing load means the unbalancing load, when the rotary table is used with support table in vertical application. The guide line figure will be different according to the servo motor, please refer ☞ P.37 for more detail.

★\*3 Driving torque means the torque at MAX. rotation speed after acceleration. Driving torque is almost constant and independent from the load except unbalancing load is applied.

★ L type (Motor is mounted at left hand side) is available for all rotary tables.

★ Rotary joint is available for all rotary tables, please refer ☞ P.54.

★ Ultra heavy duty type is available for CNC321, 401.

★  $\alpha$ iF22/4000 motor can be mounted on CNC321, 401.

★ The air-hydraulic booster is available, when the rotary table with hydraulic clamping system is used on the M/C without hydraulic source, please refer ☞ P.55.

★ AWC system is available for all rotary tables, please refer ☞ P.47~P.48.

★ Ultra precision type is available for all rotary tables,  $\pm 3^\circ$  or  $\pm 5^\circ$ , please refer ☞ P.53.

★  $\alpha$ iF8/4000 motor can be mounted on CNC260, 302.

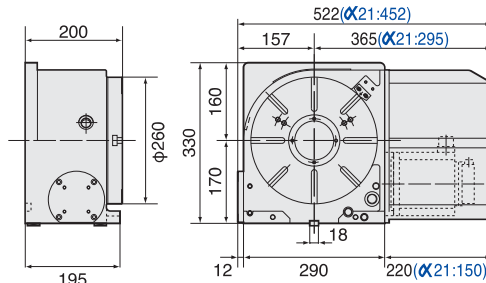
★ The supplied hydraulic pressure is 3.5MPa for hydraulic clamping system.

# CNC260,302,321,401,B350

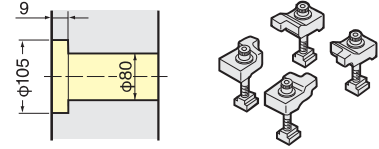


External dimensions will be different according to the type of the servo motors. Dimensions with FANUC motor or with NIKKEN  $\alpha 21$  controller ( $\alpha 21$  : ) are shown. Please contact with us for CAD data (2D:DXF, 3D:PARASOLID).

## CNC260, CNCZ260

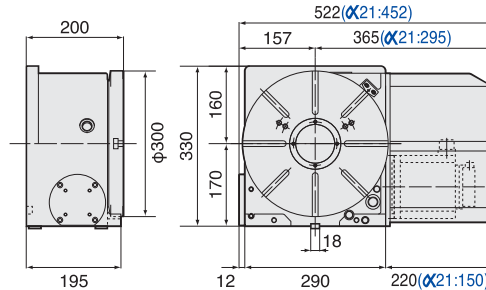


Pneumatic Brake Torque UP  
588Nm

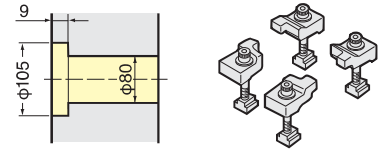


★ For the rotary table with pneumatic brake, air purge function is provided inside the motor cover as standard.

## CNC302, CNCZ302

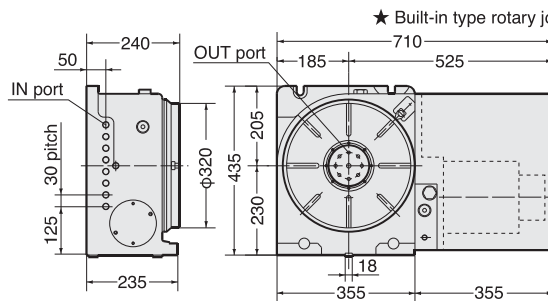


Pneumatic Brake Torque UP  
588Nm

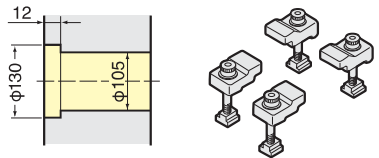


★ For the rotary table with pneumatic brake, air purge function is provided inside the motor cover as standard.

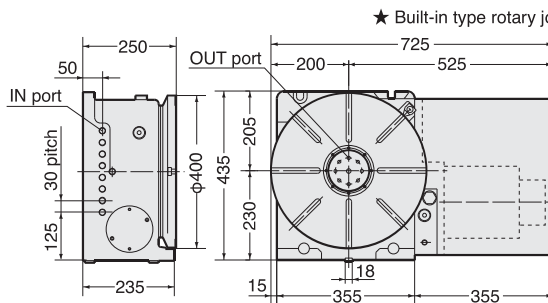
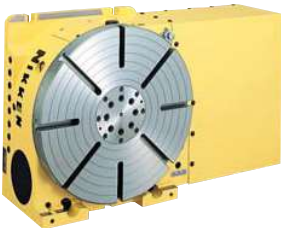
## CNC321, CNCZ321



★ Built-in type rotary joint can be mounted on CNC321 & 401, refer P.49



## CNC401, CNCZ401



★ Built-in type rotary joint can be mounted on CNC321 & 401, refer P.49

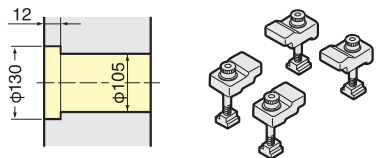
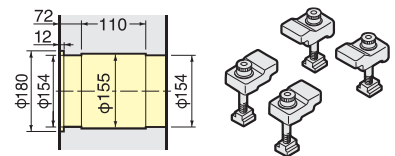
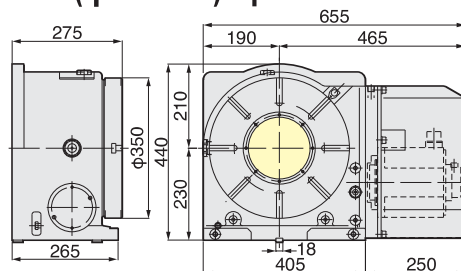


Photo shows with rotary joint (option).

## CNCB350 **NEW** Ultra Big Bore (φ154mm) Specification available as an option.



★ For accuracy standard, refer P.51, 52

★ For fitting metal and stepped guide piece, refer P.22

★ For scroll chuck, tailstock and other optional accessories, refer P.49, 50

★ For the condition of CNC table which is mounted on CNC special purpose machine, refer P.59, 60